

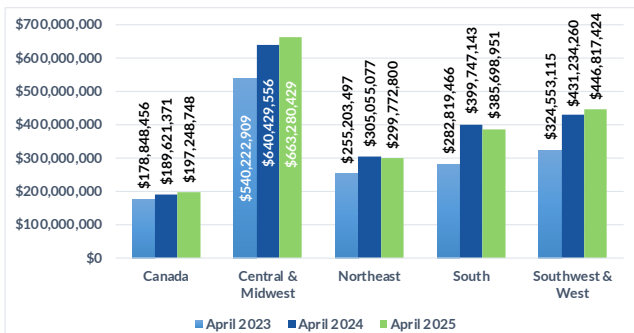


Domestic Customers who each have a balance under \$1.5 million (42,665 Customers)

Total Due Domestic April 2025: \$1,992,818,351

1 TOTAL RECEIVABLE DOLLARS BY REGION

Receivable balances accumulated for each region to show YoY data for March

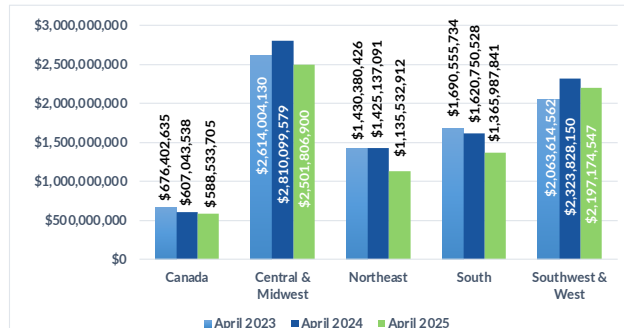


Domestic Customers who each have a balance over \$1.5 million (3,371 Customers)

Total Due Domestic April 2025: \$7,789,035,906

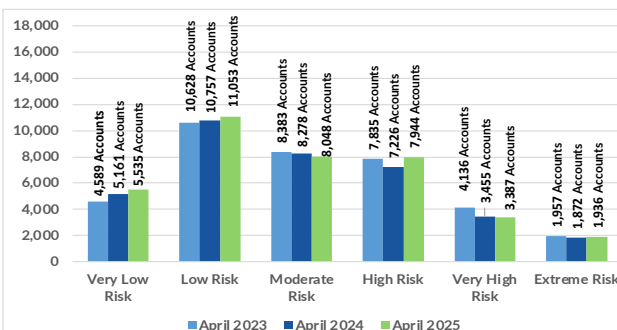
1 TOTAL RECEIVABLE DOLLARS BY REGION

Receivable balances accumulated for each region to show YoY data for March



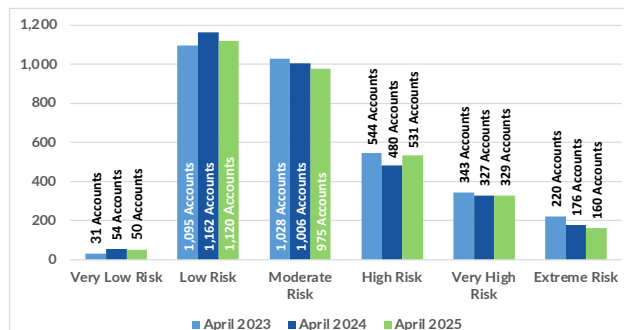
2 PROJECTED PAYMENT RISK

of Accts scored in each ABC-NET30SCORE (Speed of Payment) Risk Category Comparing April 2023, 2024, and 2025



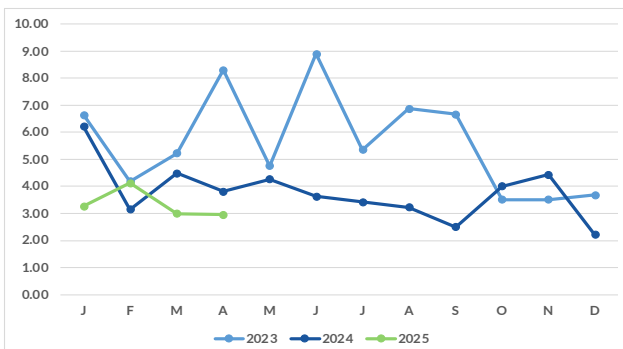
2 PROJECTED PAYMENT RISK

of Accts scored in each ABC-NET30SCORE (Speed of Payment) Risk Category Comparing April 2023, 2024, and 2025



3 AVERAGE DAYS SLOW BY MONTH

Receivable balances accumulated by each aging bucket, weighed by its average age and divided by the total receivables



3 AVERAGE DAYS SLOW BY MONTH

Receivable balances accumulated by each aging bucket, weighed by its average age and divided by the total receivables.

