

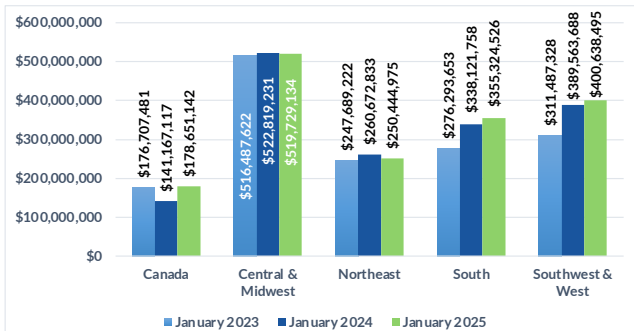
NCCA BY THE NUMBERS | JANUARY 2023-2025



Domestic Customers who each have a balance under \$1.5 million (41,322 Customers)
Total Due Domestic January 2025: \$1,705,091,844

1 TOTAL RECEIVABLE DOLLARS BY REGION

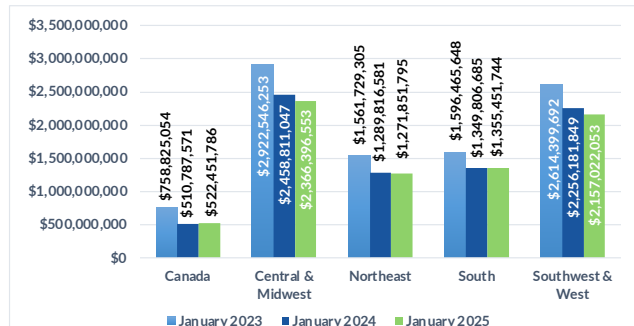
Receivable balances accumulated for each region to show YoY data for January



Domestic Customers who each have a balance over \$1.5 million (3,405 Customers)
Total Due Domestic January 2025: \$7,673,173,930

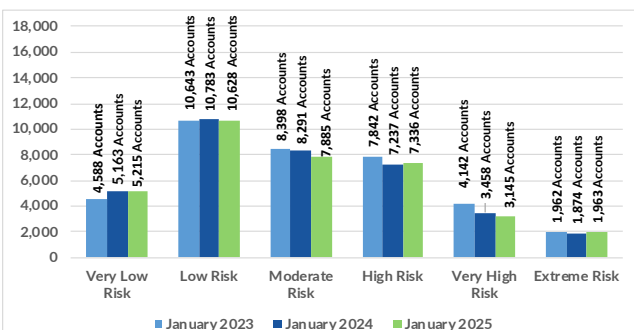
1 TOTAL RECEIVABLE DOLLARS BY REGION

Receivable balances accumulated for each region to show YoY data for January



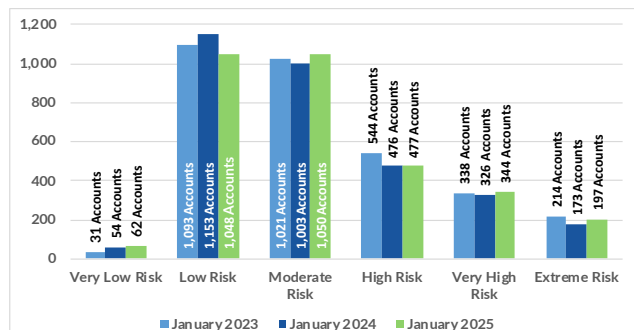
2 PROJECTED PAYMENT RISK

of Accts scored in each ABC-NET30SCORE (Speed of Payment) Risk Category Comparing January 2022, 2023, and 2024



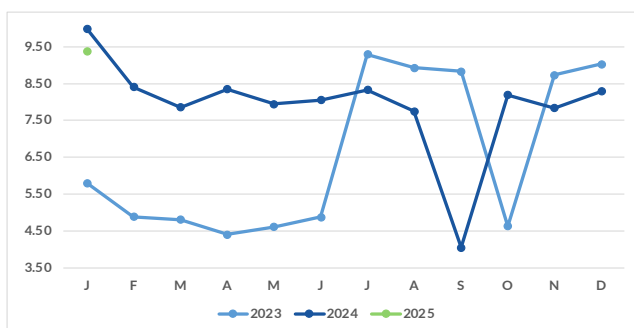
2 PROJECTED PAYMENT RISK

of Accts scored in each ABC-NET30SCORE (Speed of Payment) Risk Category Comparing January 2023, 2024, and 2025



3 AVERAGE DAYS SLOW BY MONTH

Receivable balances accumulated by each aging bucket, weighed by its average age and divided by the total receivables



3 AVERAGE DAYS SLOW BY MONTH

Receivable balances accumulated by each aging bucket, weighed by its average age and divided by the total receivables.

