

NCCA BY THE NUMBERS | NOVEMBER 2022-2024

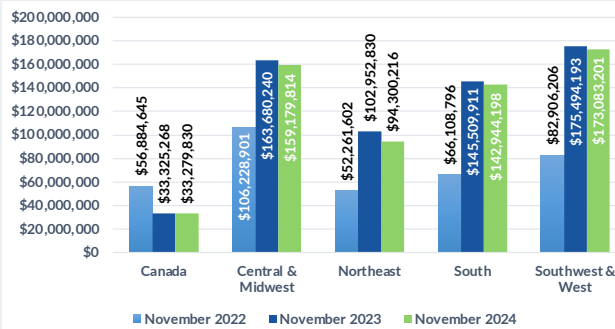


Domestic Customers who each have a balance under \$1.5 million (43,320 Customers)
Total Due Domestic November 2024: \$602,787,259

1

TOTAL RECEIVABLE DOLLARS BY REGION

Receivable balances accumulated for each region to show YoY data for November

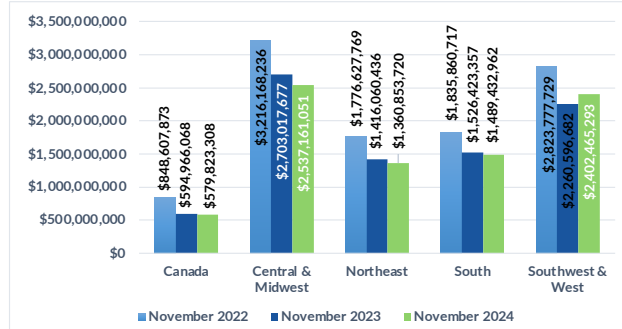


Domestic Customers who each have a balance over \$1.5 million (3,455 Customers)
Total Due Domestic November 2024: \$8,369,736,334

1

TOTAL RECEIVABLE DOLLARS BY REGION

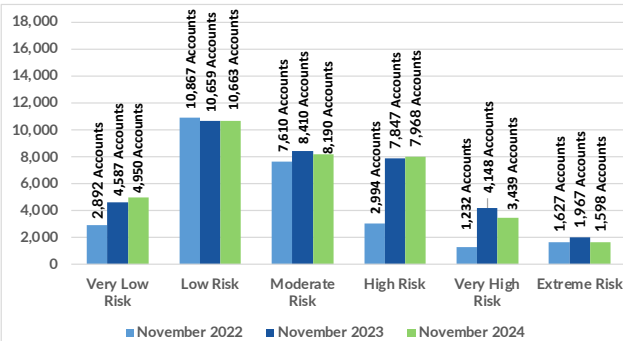
Receivable balances accumulated for each region to show YoY data for November



2

PROJECTED PAYMENT RISK

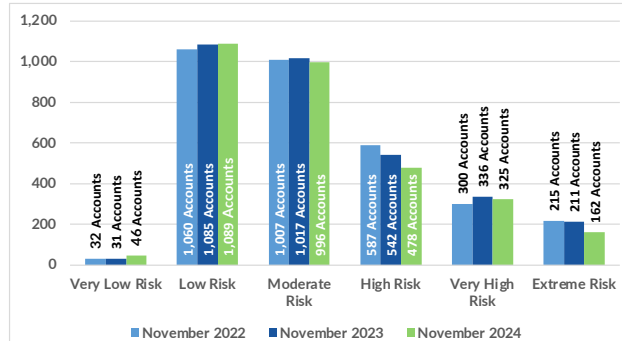
of Accts scored in each ABC-NET30SCORE (Speed of Payment) Risk Category Comparing November 2022, 2023, and 2024



2

PROJECTED PAYMENT RISK

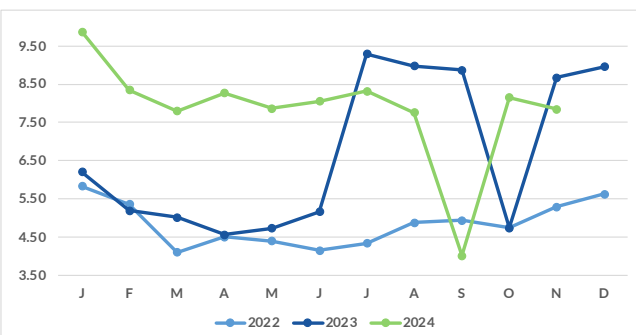
of Accts scored in each ABC-NET30SCORE (Speed of Payment) Risk Category Comparing November 2022, 2023, and 2024



3

AVERAGE DAYS SLOW BY MONTH

Receivable balances accumulated by each aging bucket, weighed by its average age and divided by the total receivables



3

AVERAGE DAYS SLOW BY MONTH

Receivable balances accumulated by each aging bucket, weighed by its average age and divided by the total receivables.

