

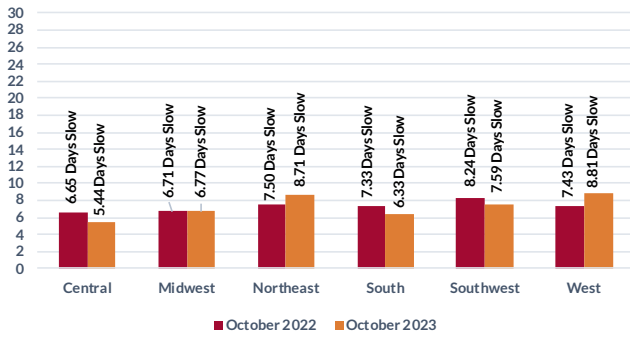


## NON-TOP 100 RETAILERS

Credit Balances are offset for Adjusted Receivable Balances.  
Individual chart data is based on 50,000–60,000 accounts.

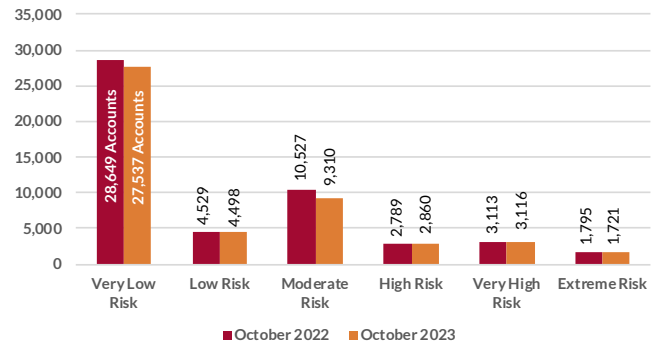
### 1 DOLLAR WEIGHTED DAYS SLOW BY REGION

Receivable balances accumulated by each aging bucket, weighed by its average age and divided by the total receivables.



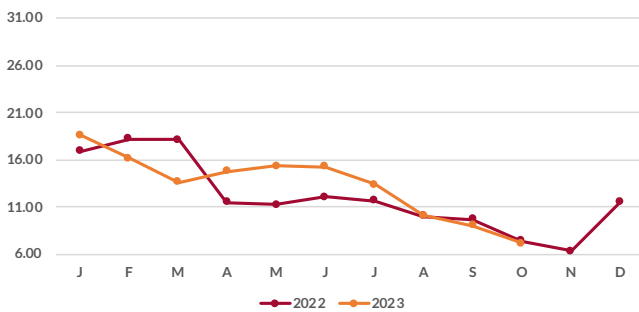
### 2 NUMBER OF ACCOUNTS BY RISK CATEGORY

Number of accounts scored in each risk category comparing October 2021 and October 2022.



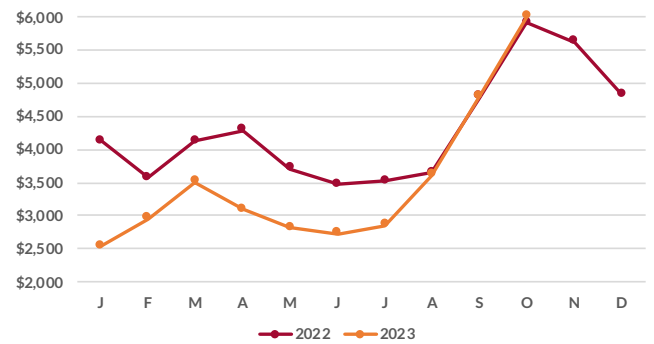
### 3 AVERAGE DAYS SLOW BY MONTH

Receivable balances accumulated by each aging bucket, weighed by its average age and divided by the total.



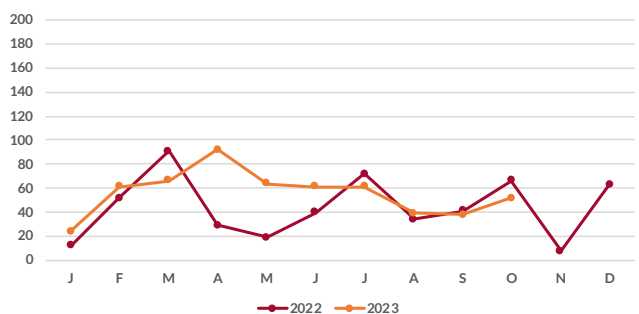
### 4 AVERAGE RECEIVABLES BY MONTH

Monthly receivables balances divided by the number of accounts that had receivables balances in that month.



### 5 MONTHLY COLLECTION PLACEMENTS

The Number of PFC Flashes entered each month in 2021 and 2022.



### 6 TOTAL DOLLARS DUE BY REGION

Receivable balances accumulated for each region to show YOY data for October.

